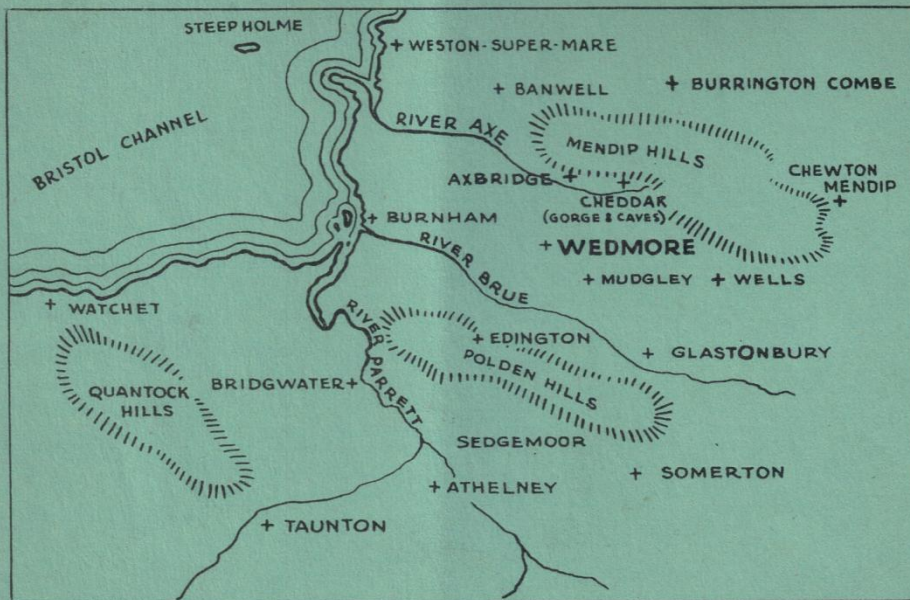


Elmsett Hall Hotel



and Country Club

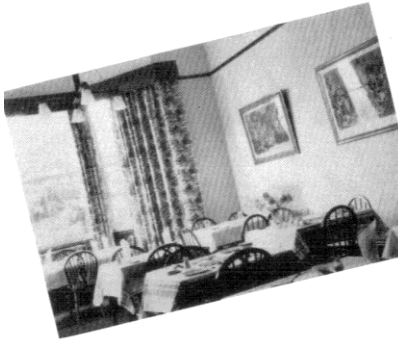
WEDMORE, SOMERSET



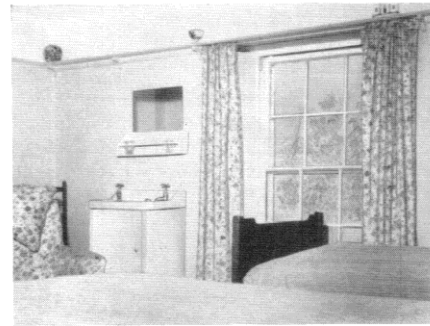
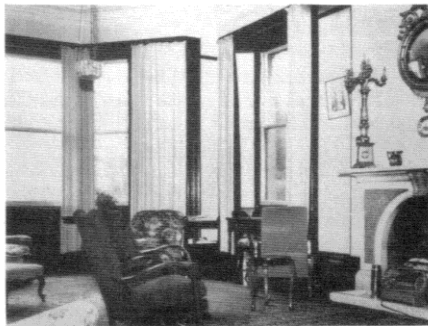
Bridgwater	15 miles	Highbridge	8 miles
Bristol	20 "	Taunton	26 "
Burnham-on-Sea	10 "	Wells	8 "
Cheddar	4 "	Weston-super-Mare	16 "

GOLF COURSES at Burnham-on-Sea, Weston-super-Mare, and Wells.

W. & S. LTD.



As you'll see Elmsett



FOR HAPPY CAREFREE DAYS

Having introduced Elmsett and enumerated its attractions let's delve a little deeper. The moment you enter its Lobby you are aware of a sense of well-being, of that peacefulness which is the result of efficiency and personal attention, so essential to the perfect holiday.

The Lounge, rich in comfort, contains impressive focal points in a period fireplace and decor, and has an inviting atmosphere where one can be at ease. Winter residents will appreciate the warmth and the

nostalgic aroma of log fires.

Good appetites anticipate good food and that is exactly what you will find in the large and well-equipped Dining Room.

Outdoor facilities of Elmsett are a great attraction. Here the gardens with lawns, rockeries, hard tennis court, running stream and small lake are for your use and pleasure.

The Country Club Bars, one period, the other modern, although an integral part of Elmsett are completely self contained with an outside entrance and one from within.

Country rich in History and Beauty

The village of Wedmore is one of the largest in Somerset and occupies a central position on what the Saxons named "The Isle of Wedmore" between the rivers Axe and Brue.

The Church of St. Marys which since 878 has been associated with King Alfred and Guthram—the Danish soldier and leader, is a dominating and eye-catching architectural feature which has become well known as "The Cathedral of The Moors".

All the country around the village is full of historical interest and legend, and the beauties of the Mendip, Polden and Quantock Hills should be visited.

It is very close to the Cheddar Valley and the Vale of Avalon, Athelney (where Alfred burnt the cakes) and Sedgemoor.

Not far distant is Taunton Vale (with memories of the Monmouth Rebellion and the Bloody Assize).

See map opposite